





The history of CZ LOKO, a.s., reaches back to 1849 when the factories in Ceska Trebova began repairing steam locomotives and railway cars. Today, CZ LOKO is a significant European producer of locomotives and special railway vehicles, with a wide range of products and services rendered.

# vision mission

Our goal is to increase, through innovative and attainable solutions, the safety, reliability and effectiveness of the vehicles that are the source of movement on railways.

CZ LOKO is a reliable and perspective partner for railway transporters in terms of construction, modernisation, repairs, maintenance and rental of locomotives and special railway vehicles.

„CZ LOKO's future

is in providing complete service  
on-site at our partners and clients  
both domestic and abroad, and  
focusing on further expanding our  
export activities.“



Josef Gulyas  
managing director  
and vice chairman of the board

**CZ LOKO**  
*Locomotion Excellence®*





## Our Own Way

The CZ LOKO brand signifies our own know-how in designing, manufacturing, modernizing and repairing locomotives and special railway vehicles; our complete technical solution; flexible approach to the needs of our business partners; and effective and

methodological process management. Our highly professional care of vehicles, ongoing collection of operational data and its systematic evaluation results in an ever-increasing efficiency of our Partners' investments.



Design, excellence and construction of new diesel-electric locomotives



Modernisation of diesel-electric locomotives and special railway vehicles

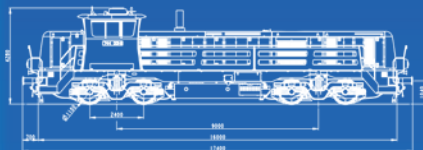


Diesel-electric and electric locomotive repairs



Locomotives for hire, railway vehicle service and maintenance

# Choosing the best solution



..... new machine



[ new diesel engine  ]



..... main repair / remotorisation



[ original diesel engine / new diesel engine  ]

..... partial repair / remotorisation

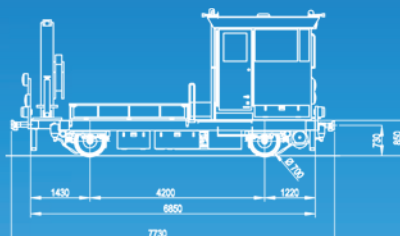


[ original diesel engine / new diesel engine  ]

..... total modernisation



[ new diesel engine  ]



..... new machine / modernisation



[ original diesel engine / new diesel engine  ]



|     |  |
|-----|--|
| A   | Achenseebahn   |
| ALB | A.B.C.D. Tirana   HSH Albanian Railways  |
| BIH | BES Company   JP Elektroprivreda Sarajevo<br>  Termoelektrana TUZLA   RMU Breza   RMU Kakanj<br>  Sisecam Soda Lukavac   |
| BLG | SIMEX   TEC - Bobov Dol EAD  |
| BYS | Beloruskaja Železnaja Doroga   ASB Leasing   |
| CZ  | Advanced World Transport, a.s.   ArcelorMittal Ostrava, a.s.   AŽD Praha s.r.o.   BF Logistics, s.r.o.<br>  Coal Services, a.s.   ČD Cargo, a.s.   České dráhy, a.s.<br>  Dopravní podnik hl. m. Prahy - METRO   Elektrizace železnic Praha a.s.   INEKON GROUP, a.s.   RM LINES, a.s.   SD - Kolejová doprava, a.s.   Sokolovská uhelná, a.s.   Správa železniční dopravní cesty, s.o.   STRABAG Rail a.s.   ŠKODA AUTO, a.s.   TŘINECKÉ ŽELEZÁRNY, a.s.   UNIPETROL DOPRAVA, s.r.o.<br>  VÍTKOVICE Doprava, a.s. |
| D   | ArcelorMittal Eisenhüttenstadt, GmbH   Brunnhuber Eisenhüttenstadt   Railsystems RP  |
| EST | Port of Sillamäe – SILPORT   EVR Cargo   |
| FIN | Fennia Rail Oy   |
| H   | Budapesti Közlekedési Zrt.   GanzPlan Hungaria<br>  MÁV Debrecen   MOVILL   Swietelsky Budapest  |
| ITL | Adriatico Sangritana S.p.A.   Dinazzano PO S.p.A.<br>  Del Funco Giera Ferrovia   Ferrovie Sud Est   |

| Ferrovie Nord Cargo S.r.l. | Rail Traction Company  
| Railconsult Mantova | Schenker Italiana S.p.A.  
| Servizi Ferroviari Integrati S.r.l. | Sistemi Territoriali S.p.A.  
| TIBER.CO / Linea Ferroviaria | TRENORD S.r.l.

LT Lietuvos Gelezinkeliai | Transmasholding Baltija  
| VLRD Vilnius

LV Latvijas dzelzceļs | LDZ RSS

NL ACTS Netherland | Short lines

PL Ciech CARGO Sp. z o.o. | DB Schenker Rail Tabor S.A.  
| EURONAF T S.A. | KWB „Adamow“, S.A. | Industrial  
Division Sp. z o.o. | Lubelski Węgiel „BOGDANKA“  
S.A. | METRO Warszawskie Sp. z o.o. | OLPP, S.A.  
| ORGANIKA Nowa Sarzyna, S.A. | ORLEN Kol Trans, Sp.  
z o.o. | Pojazdy Szynowe PESA Bydgoszcz S.A.  
| POL-MIEDZ Trans, Sp. z o.o. | PUK Kolprem Sp. z o.o.  
| STK S.A. | TRANSCHEM, Sp. z o.o.

RUS ZAO Transmashholding

SK BJS Slovakia | Slovnaft Bratislava | U.S. Steel Košice,  
s.r.o. | Železnica spol. Cargo Slovakia | Železnica  
spoločnosť Slovensko

**SRB** AD „Železnice Srbije“ | JP EPS Beograd | KlimaShop  
Begec | Kombinovani prevoz | NIS / GAZPROM NEFT  
(Rafinerija Pancevo) | MarexTrade Beograd | PD Rudarski  
basen „Kolubara“ d.o.o. | TENT Obrenovac

TR TCDD

UA ОАО „Тепловозоремонтный завод“ Полтава



new and modernised locomotives **908 pcs**

business abroad **326 pcs**

(as at 30.6. 2016)





locomotive and railway car repairs launched 1849

diesel electric locomotive repairs 1966

electric locomotive repairs 1988

first diesel-electric locomotive constructed 2003

Phoenix-Zeppelin, s.r.o. (Caterpillar) partnered



2004

CZ LOKO POLSKA founded 2011

the first asynchronous four-axle locomotive constructed 2012

the EffiShunter 300 shunting locomotive designed 2013

CZ LOKO Italia founded 2016





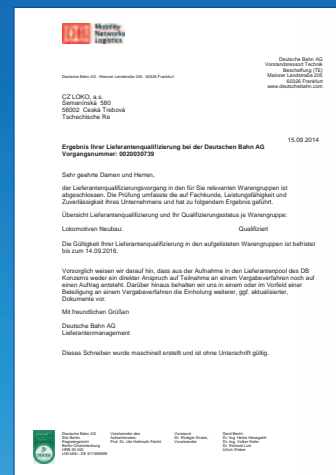
## Certificates and Patents

The CZ LOKO Company owns internationally accredited certificates of quality. Also, national operator and infrastructure administrator audits guarantee CZ LOKO products to be of highest quality.

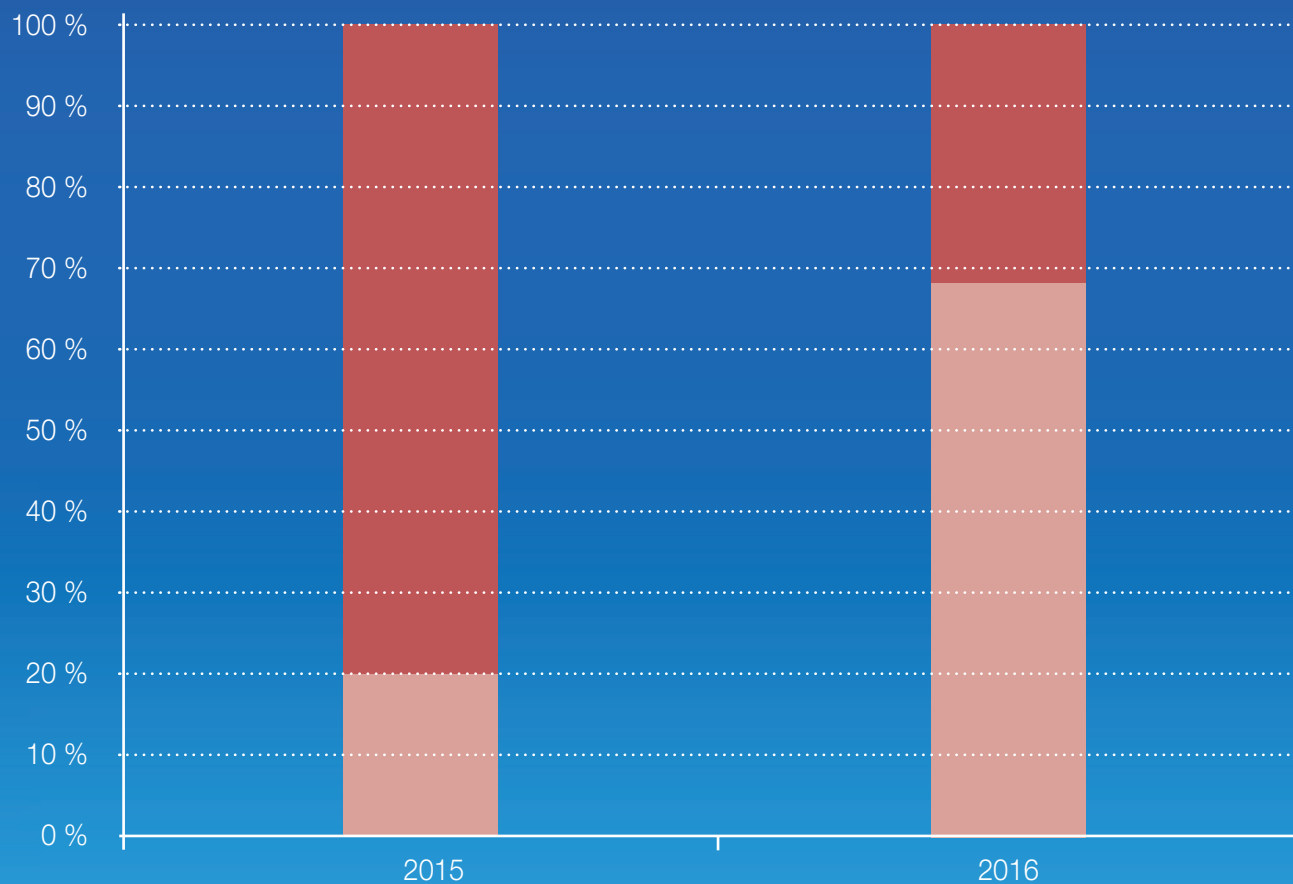
**CZ LOKO**  
*Locomotion Excellence®*



Some samples of quality, technical skill and competency certificates



All CZ LOKO certificates are available for download on [www.czloko.cz](http://www.czloko.cz)



Repairs Production



# Company Top Management



## Board of Directors



Josef Bárta  
Chairman of the Board



Josef Gulyás  
Deputy Chairman  
of the Board



Michal Holý  
Board Member



Aleš Podolák  
Board Member



Jan Bárta  
Board Member

## Supervisory Board



Stanislav Chládek  
Chairman of the  
Supervisory Board

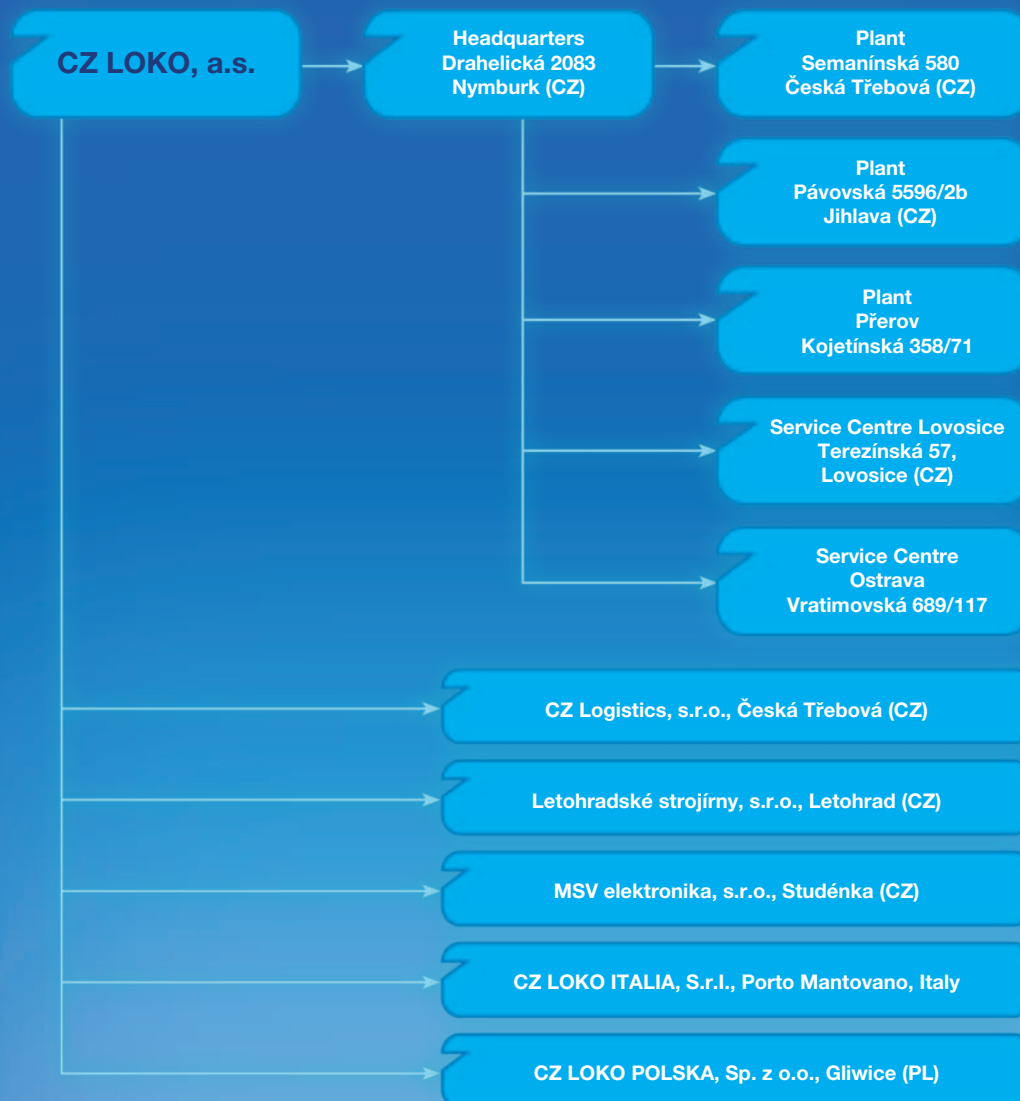


Jan Grünwald  
Supervisory Board  
Member



Bedřich Bulíčka  
Supervisory Board  
Member

(as at 7. 12. 2015)



| CZ LOKO | 2016 |
|---------|------|
|         | 11   |



CZ LOKO Ceska Trebova Plant



CZ LOKO Jihlava Plant



CZ LOKO Prerov Plant

**CZ LOKO**  
*Locomotion Excellence<sup>®</sup>*

**CZ LOKO, a.s.**

Semanínská 580

560 02 Česká Třebová, Czech Republic

GPS: 49°53'48.433"N, 16°26'38.152"E

tel.: +420 465 558 101

e-mail: [czloko@czloko.cz](mailto:czloko@czloko.cz)

[www.czloko.cz](http://www.czloko.cz)



[www.facebook.com/czloko](https://www.facebook.com/czloko)

**Head Office**

Drahelická 2083

288 03 Nymburk, Czech Republic

GPS: 50°10'51.122"N, 15°1'41.578"E

tel.: +420 325 518 811